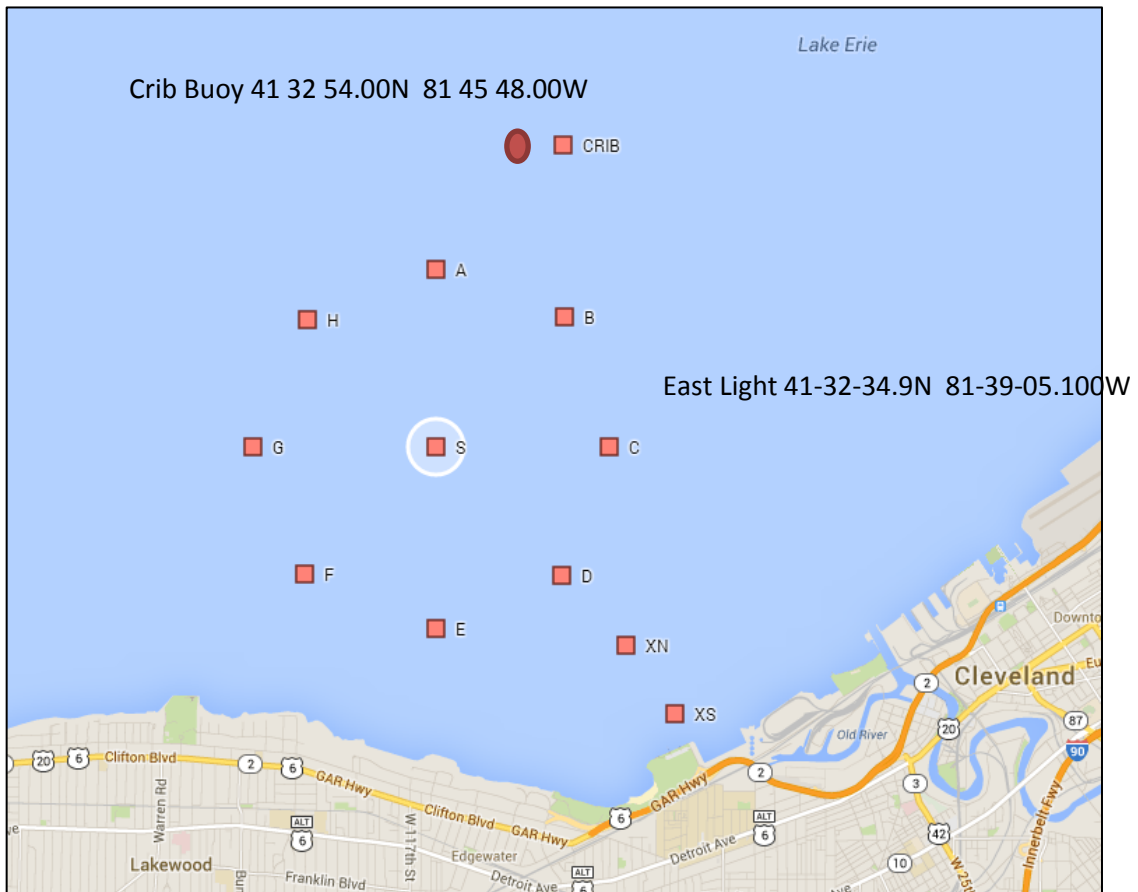


## Courses – Illustration 3

### Amendment 2 (first mark to Starboard)

Edgewater Yacht Club – Cleveland Race Week  
Friday June 23, 2017



Marks to be passed in the following order:

Mark	Approx. Bearing to Next Mark	Distance to Next Mark
<b>D - Start</b>	Displayed	0.75
<b>Orange tet to Star</b>	-	Approx. 0.75-1.0
<b>S to Starboard</b>	020	1.62
<b>Crib Buoy to Star.</b>	090	0.60
<b>Crib to Starboard</b>	094	4.44
<b>East Light CLE Harb.</b>	227	2.88
<b>Mather - Finish</b>	-	

Caution – The CLE West Harbor has moored barges and poorly lighted fixed marks. Maintain a lookout.